



Curved LED



Description: P1.538, P2, P2.5, P1.86, 3.076

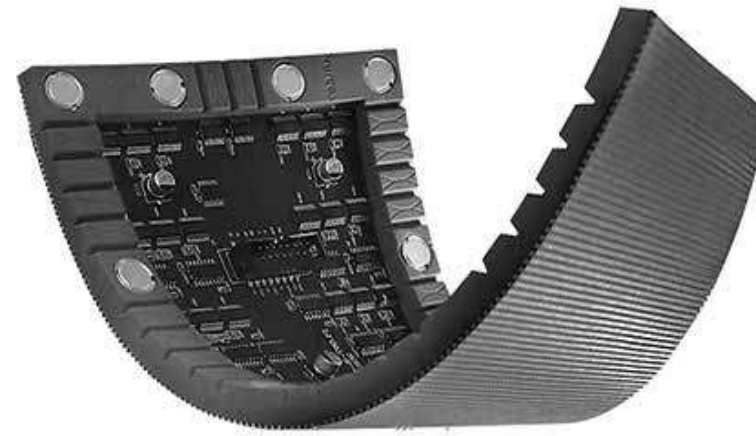
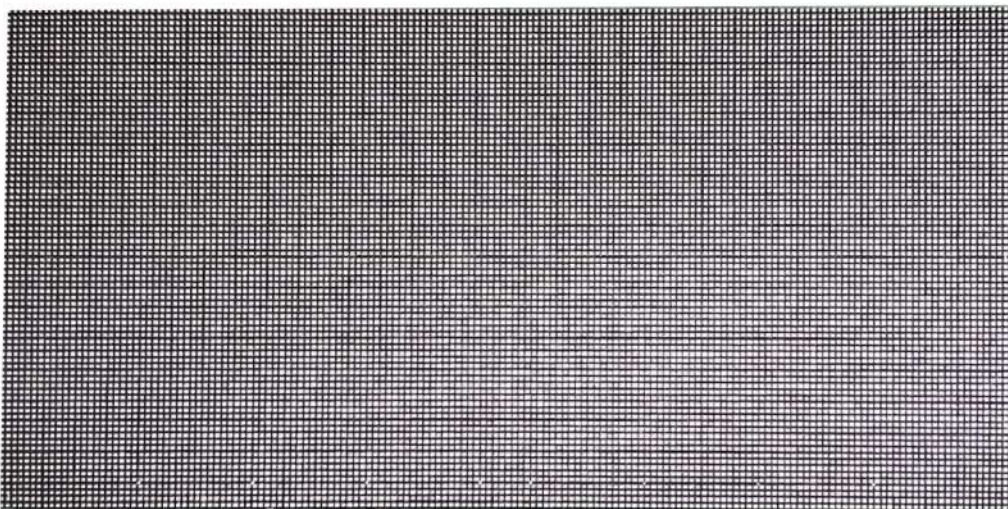
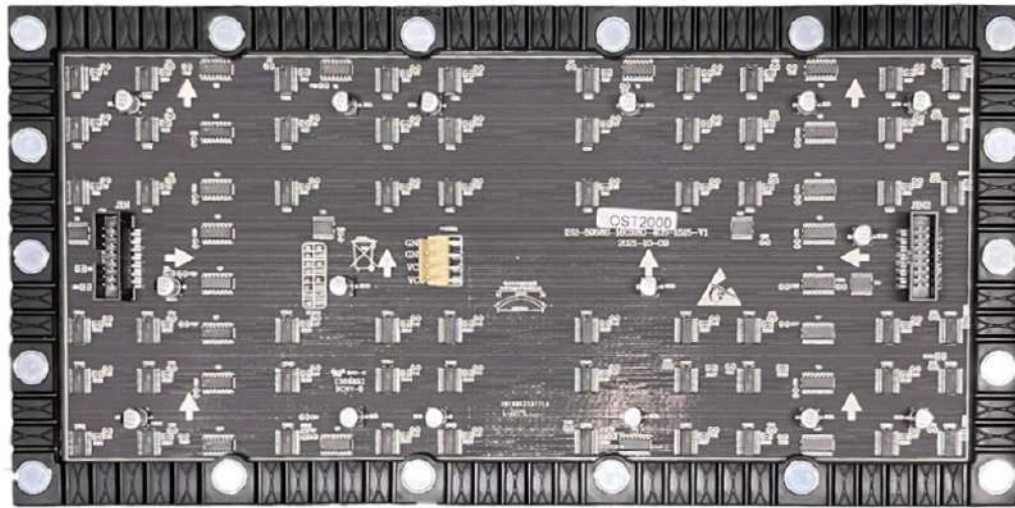
Module Structure: Lamp & Driven in 1

Lamp: SMD1212, SMD1515, SMD2020

Parameters (T=25°C)

Item	Parameter					Remark
Basic Parameter						
Pixel Pitch	1.538mm	1.86mm	2mm	2.5mm	3.076mm	
Pixel Structure	3IN1 SMD	3IN1 SMD	3IN1 SMD	3IN1 SMD	3IN1 SMD	
Pixel Density	422500pixels/m ²	288906pixels/m ²	250000 pixels/m ²	409600 pixels/m ²	105626 pixels/m ²	
Module Resolution	208x104mm	172x86mm	160x80mm	128x64mm	104x52mm	
Module Size (WXH)	320mmX160mm	320mmX160mm	320mmX160mm	320mmX160mm	320mmX160mm	
Optical Parameter						
Single Point Brightness,Chroma Correction	support	support	support	support	support	
White Balance Brightness	≥600cd/m ²	≥600cd/m ²	≥600cd/m ²	≥600cd/m ²	≥600cd/m ²	
Color Temperature	2000K—12500K Adjustable	2000K—12500K Adjustable	2000K—12500K Adjustable	2000K—12500K Adjustable	2000K—12500K Adjustable	
Horizontal Viewing Angle	160 Deg.	160 Deg.	160 Deg.	160 Deg.	160 Deg.	
Vertical Viewing Angle	140 Deg.	140 Deg.	140 Deg.	140 Deg.	140 Deg.	
Visible Distance	3+ m	4+ m	4+ m	5+ m	6+ m	
Brightness Uniformity	≥97%	≥97%	≥97%	≥97%	≥97%	
Contrast Ratio	≥5000:1	≥5000:1	≥5000:1	≥5000:1	≥5000:1	
Process Performance						
Signal processing bits	16 bits*3	16 bits*3	16 bits*3	16 bits*3	16 bits*3	
Gray scale	12-16Bit	12-16Bit	12-16Bit	12-16Bit	12-16Bit	
Control Distance	Cable: 100 m,Optical Fiber: 10km	Cable: 100 m,Optical Fiber: 10km	Cable: 100 m,Optical Fiber : 10km	Cable: 100 m,Optical Fiber: 10km	Cable: 100 m,Optical Fiber: 10km	
Drive Mode	constant current source driver	constant current source driver	constant current source driver	constant current source driver	constant current source driver	
Frame Rate	≥60HZ	≥60HZ	≥60HZ	≥60HZ	≥60HZ	
Refresh Rate	1920-3840 HZ	1920-3840 HZ	1920-3840 HZ	1920-3840 HZ	1920-3840 HZ	
Way to Control	Synchronize	Synchronize	Synchronize	Synchronize	Synchronize	
Brightness Adjustment Range	0-100 Stepless Adjustment	0-100 Stepless Adjustment	0-100 Stepless Adjustment	0-100 Stepless Adjustment	0-100 Stepless Adjustment	
Usage Parameter						
Continuous Operation Time	≥72h	≥72h	≥72h小时	≥72h	≥72h	
Expected LED Lifetime(Max)	>100,000 hours	>100,000 hours	>100,000 hours	>100,000 hours	>100,000 hours	
IP Rating	IP20	IP20	IP20	IP20	IP20	
Operating Temperature	-20 °C to 50 °C	-20 °C to 50 °C	-20 °C to 50 °C	-20 °C to 50 °C	-20 °C to 50 °C	
Operating Humidity	10 %- 80% RH No Condensation	10 %- 80% RH No Condensation	10 %- 80% RH No Condensation	10 %- 80% RH No Condensation	10 %- 80% RH No Condensation	
Storage Temperature	-20 °C to 60 °C	-20 °C to 60 °C	-20 °C to 60 °C	-20 °C to 60 °C	-20 °C to 60 °C	
Electrical Parameter						
Operating Voltage	DC4. 5-5V	DC4. 5-5V	DC4. 5-5V	DC4. 5-5V	DC4. 5-5V	
Power Requirements	AC: 220× (1±10%) V、50× (1±5%) Hz	AC: 220× (1±10%) V、50× (1±5%) Hz	AC: 220× (1±10%) V、50× (1±5%) Hz	AC: 220× (1±10%) V、50× (1±5%) Hz	AC: 220× (1±10%) V、50× (1±5%) Hz	
Maximum power consumption	650W/m ²	650W/m ²	650W/m ²	650W/m ²	650W/m ²	
Average power consumption	270W/m ²	270W/m ²	270W/m ²	270W/m ²	270W/m ²	

Details

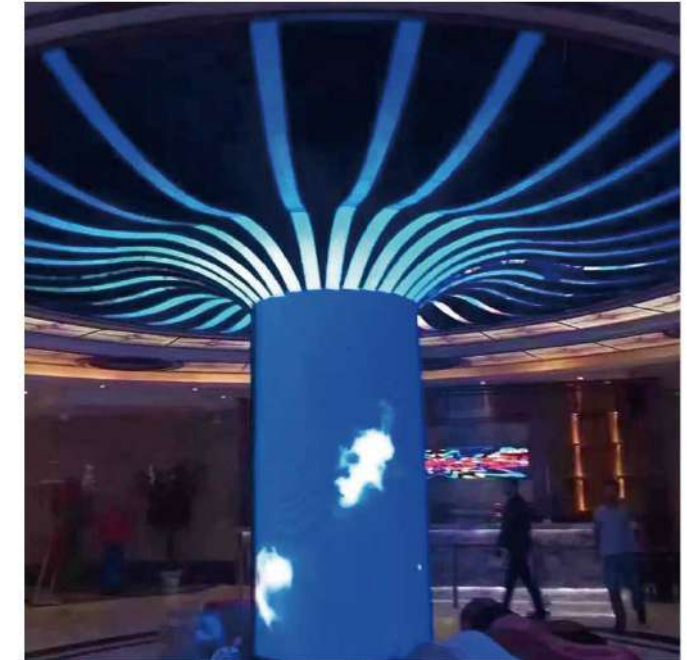
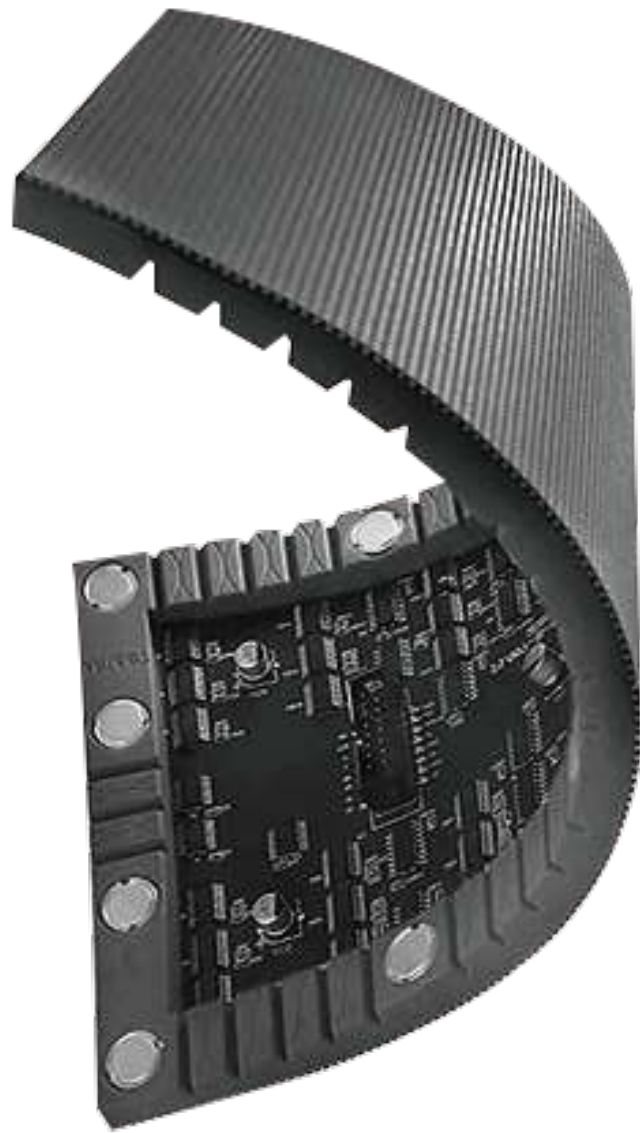


Pros

- The PCB board is made of flexible soft board, and the bottom shell is made of rubber, which has high strength compression and distortion resistance
- The module is fixed to the steel structure by magnets, so the installation is simple
- Soft, light and thin, the thickness of the soft module is about 10mm
- Good ductility, flexible and folding, can be freely combined into any shape, suitable for a variety of creative display
- The maximum bending degree between 50-70 degrees



Pros



Tests

Categories	Item	Reference Standard	Experimental Conditions	Duration Time	Receiving Standard
LED Lamp					
Environmental Experiments	Temperature Cycle	JESD22-A104-A	-40°C~25°C~100°C~25°C 30min, 5min, 30min, 5min	Cycle 100 times	0/50
	Cold & Heat Shock	JESD22-A106	-40°C~100°C 30 min,30min	Cycle 100 times	0/50
	High temperature storage	JIS C 7021 (1977)B-11	Ta=60°C RH=90%	1000 hours	0/50
Lifetime Test	Ambient temperature lifetime tests	JESD22-A108-A	Ta=25°C Test Conditions: Power on and lit	1000 hours	0/50
	High temperature lifetime tests	JESD22-A101	Ta =85°C RH=85% Test Conditions: Power on and lit	1000 hours	0/50
Mechanical Vibration Experiments	Mechanical vibration	MIL-STD-883 Method 2007	20G minutes, 20 to 2000Hz4 cycles, 4 minutes. Each,X,Y,Z	---	0/50
LED Finished Unit Cabinet					
Environmental Storage Experiment	Low temperature storage tests	GB2423.2	Storage at (-40±2)°C for 4h, recovery at room temperature for 4 h,normal display and uniformity without abnormalities and no uncontrolled spots	8 hours	0/50
	High temperature storage tests	GB2423.2	Storage at (60±2)°C for 4h, recovery at room temperature for 4 h, normal display and uniformity without abnormalities and no uncontrolled spots	8 hours	0/50
Ageing Test	Ambient temperature ageing test		Ta=25°C72-hour uninterrupted power-on display playing	72 hours	0/50
	High temperature ageing test	GB2423.2-89	Check every hour for 8h at (40±2)°C.Normal display and uniformity without abnormalities and no uncontrolled spots	8 hours	0/50
Mechanical Vibration Experiments	Mechanical vibration	GB6587.4-86	Vibration frequency 5HZ-55HZ-5HZ, amplitude 0.19mm, 5 minutes	5 min	0/50

Notes

Using environment

- This product is an outdoor display; avoid using it in high temperature, high acid/alkali/salt environments.
- Keep away from flammable materials, gases and dusts; the normal operating temperature of this product is -20~50°C, the optimal ambient temperature is -10~40°C.
- Avoid storage in high temperature, high humidity, high acid/alkali/salt environment; keep away from flammable materials and gases.
- Avoid strong collisions and sharp objects during transport.

Operations

- This product is DC +5V power supply (working voltage: 4.5~5.2V), AC power supply is forbidden; power terminals are forbidden to be reversed.
- If the product is faulty during the warranty period, please send it back to our company for repair, or repair it under the guidance of our after-sales staff.
- during dismantling/assembly of the product, be sure to operate with care and avoid tools hitting the product.
- lightning and static protection should be done during operation and use; the box and steel structure should be earthed
- the product should not be switched on and off continuously during use; at least 1 minute should elapse between operations
- this product should not be turned off for a long time, it is recommended to use it once in half a month with 4 hours of power on; in high humidity environment, it is recommended to use it once in a week with 4 hours of power on.
- This product is not allowed to play the highest brightness all-white screen for more than half an hour, it is recommended to play dynamic video mainly.

Cleaning

- If cleaning the module surface, please use a soft bristle brush and brush gently. Do not use any liquid substances to clean the surface of the LED module, as this may damage the SMD-LED.

Moisture-proof and storage requirements

- After opening the package, the product must be stored in the temperature <30°C and humidity <60% environment.
- If the screen is not used for more than 3 days, please use the pre-lighting method first: 30%-50% brightness for 4-8 hours, and then adjust it to normal brightness (80%-100%) to light up the screen, for eliminating the moisture and normal operation.
- If the screen is not used for more than 7 days, please use the pre-lighting method first: 30%-50% brightness for more than 12 hours, and then adjust it to normal brightness (80%-100%) to light up the screen, for eliminating the moisture and normal operation.

- More than 3 days, LED screen (30%-50% in brightness) pre-lit 4-8 hours
- More than 7 days, LED screen (30%-50% in brightness) pre-lit more than 12 hours

The operation process is as follows:

