



LED Outdoor Video Wall

TPS-05

P series

Features

Lamp Beads

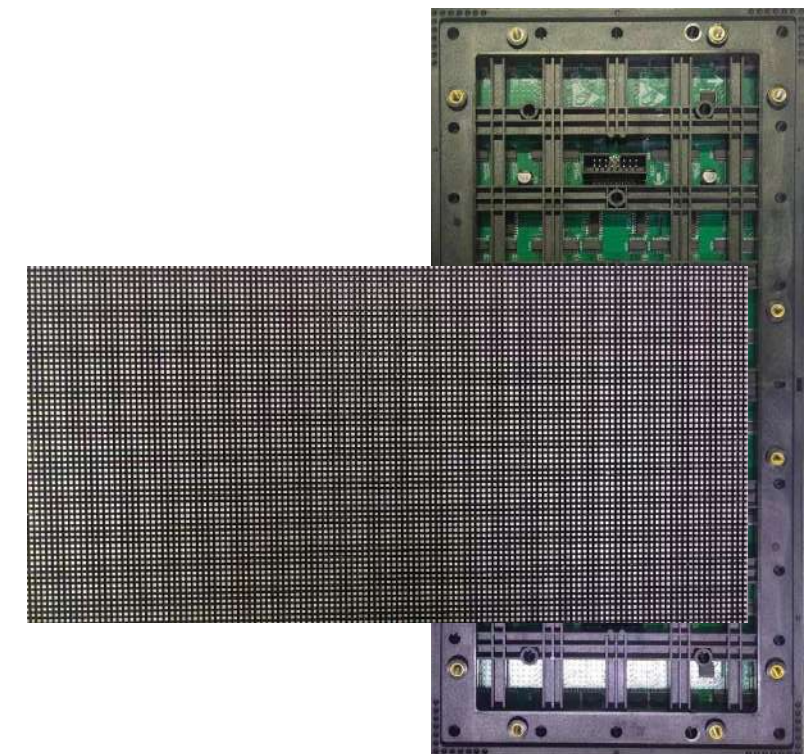
Carefully selected self-packaged high-quality lamp beads ensure higher contrast and reliability.

IC

Precision-selected PWM driver IC ensures a higher refresh rate, wider viewing angle, and an immersive viewing experience.

Kit

Featuring a brand-new high-tech bottom case design, this kit offers a rational structure and utilizes high-quality materials, making it suitable for various environments.



P series

TPS-05-250



P2.5

TPS-05-300



P3

TPS-05-400



P4

TPS-05-500



P5

TPS-05-600



P6

TPS-05-800



P8

TPS-05-1000



P10

Specifications

| | | | | | | |
|-------------------------------------|---------------------------|--------------|---------------|---------|---------------|---------|
| Pixel pitch | 2.5 | 3 | 4 | 4 | 5 | 5 |
| Pixel density(dots/m ²) | 160000 | 111111 | 62500 | 62500 | 40000 | 40000 |
| LED Package | SMD1516 | SMD1516/1921 | SMD1921 | SMD1921 | SMD1921 | SMD1921 |
| Best viewing distance(m) | ≥2.5 | ≥3 | ≥4 | ≥4 | ≥5 | ≥5 |
| Module Size(mm) | 320×160 | 192×192 | 320×160 | 320×160 | 320×160 | 320×160 |
| Weight(KG) | 0.46 | 0.39 | 0.435 | 0.435 | 0.435 | 0.435 |
| Resolution(dots) | 128×64 | 64×64 | 80×40 | 80×40 | 64×32 | 64×32 |
| Brightness(cd/m ²) | ≥4500 | ≥5000 | ≥4500 | ≥4500 | ≥5000 | ≥5000 |
| Viewing angle(degree) | H≥160° V≥160° | | H≥140° V≥120° | | H≥160° V≥140° | |
| Scan method | 1/32 | 1/16 | 1/10 | 1/10 | 1/8 | 1/8 |
| Drive IC | PWM HD High-End driver IC | | | | | |
| Refresh Rate(Hz) | ≥3840 | ≥3840 | ≥3840 | ≥1920 | ≥3840 | ≥1920 |
| Grayscale | 16384 | 16384 | 16384 | 16384 | 16384 | 16384 |
| Average Power(W/m ²) | 415 | 358 | 272/358 | 358 | 328/ 390 | 390 |
| Max power(W/m ²) | 830 | 716 | 541/716 | 716 | 656/781 | 781 |
| Operating Voltage(V) | 5 | 5 | 4.2/5 | 5 | 4.2/5 | 5 |
| Life | ≥100000 | | | | | |
| Interface definition | HUB75E | | | | | |
| Waterproof level | IP65(Front) | | | | | |

Specifications

| | | | | | | |
|-------------------------------------|---------------------------|--------------|---------------|---------|---------------|---------|
| Pixel pitch | 6 | 6 | 8 | 8 | 10 | 10 |
| Pixel density(dots/m ²) | 27778 | 27778 | 15625 | 15625 | 10000 | 10000 |
| LED Package | SMD1921/2727 | SMD1921/2727 | SMD2727 | SMD2727 | SMD2727 | SMD2727 |
| Best viewing distance(m) | ≥6 | ≥6 | ≥8 | ≥8 | ≥10 | ≥10 |
| Module Size(mm) | 192×192 | 192×192 | 320×160 | 320×160 | 320×160 | 320×160 |
| Weight(KG) | 0.3 | 0.3 | 0.42 | 0.42 | 0.43 | 0.43 |
| Resolution(dots) | 32×32 | 32×32 | 40×20 | 40×20 | 32×16 | 32×16 |
| Brightness(cd/m ²) | ≥4500 | ≥4500 | ≥4500 | ≥4500 | ≥6000 | ≥6000 |
| Viewing angle(degree) | H≥160° V≥140° | | H≥160° V≥140° | | H≥140° V≥120° | |
| Scan method | 1/8 | 1/8 | 1/5 | 1/5 | 1/2 | 1/2 |
| Drive IC | PWM HD High-End driver IC | | | | | |
| Refresh Rate(Hz) | ≥3840 | ≥1920 | ≥3840 | ≥1920 | ≥3840 | ≥1920 |
| Grayscale | 16384 | 16384 | 16384 | 16384 | 16384 | 16384 |
| Average Power(W/m ²) | 285/339 | 339 | 270/322 | 322 | 406/484 | 484 |
| Max power(W/m ²) | 570/678 | 678 | 541/644 | 644 | 812/967 | 967 |
| Operating Voltage(V) | 4.2/5 | 5 | 4.2/5 | 5 | 4.2/5 | 5 |
| Life | ≥100000 | | | | | |
| Interface definition | HUB75E | | | | | |
| Waterproof level | IP65(Front) | | | | | |

Outdoor Cabinet

Module Outdoor P4/P5/P6.67/P8/P10



Cabinet size

W960*H960*D120mm

W960*H800*D120 mm

W960*H1280*D120 mm

W1280*H1280*D120 mm

W1280*H800 *D120 mm

W1280*H640*D120 mm

W960*H640*D120 mm

W1280*H960 *D120 mm

Cabinet size and screen size should match for optimal display.

Waterproof Iron Material



- Standard Cabinet 960mm*960mm*120mm
- Eighteen modules per cabinet.
- Fixed installation.
- Black, white and grey, Can be customized.
- With 2 doors, 2 positioning pins, power supply plate and received card plate, connect plate, key.

power supply plate



connect plate

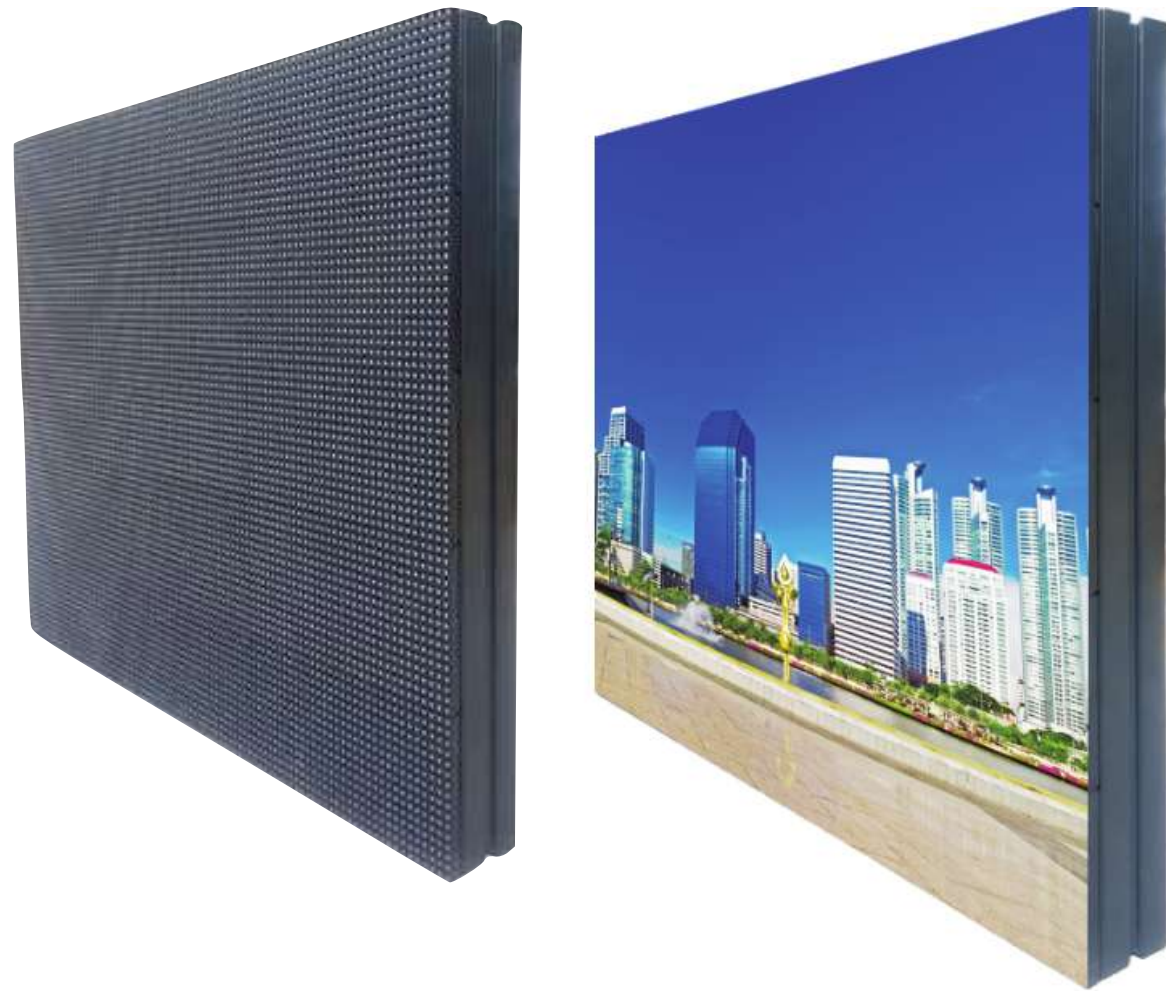


positioning pins



received card plate





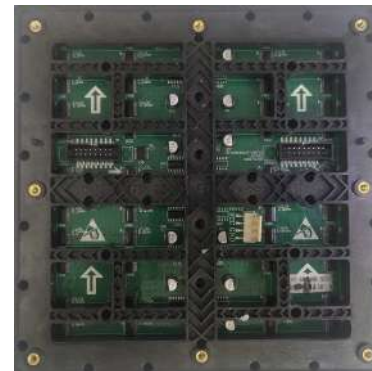
Multiple models of modules can be adapted, P2.5 - P10



P4



P5



P6



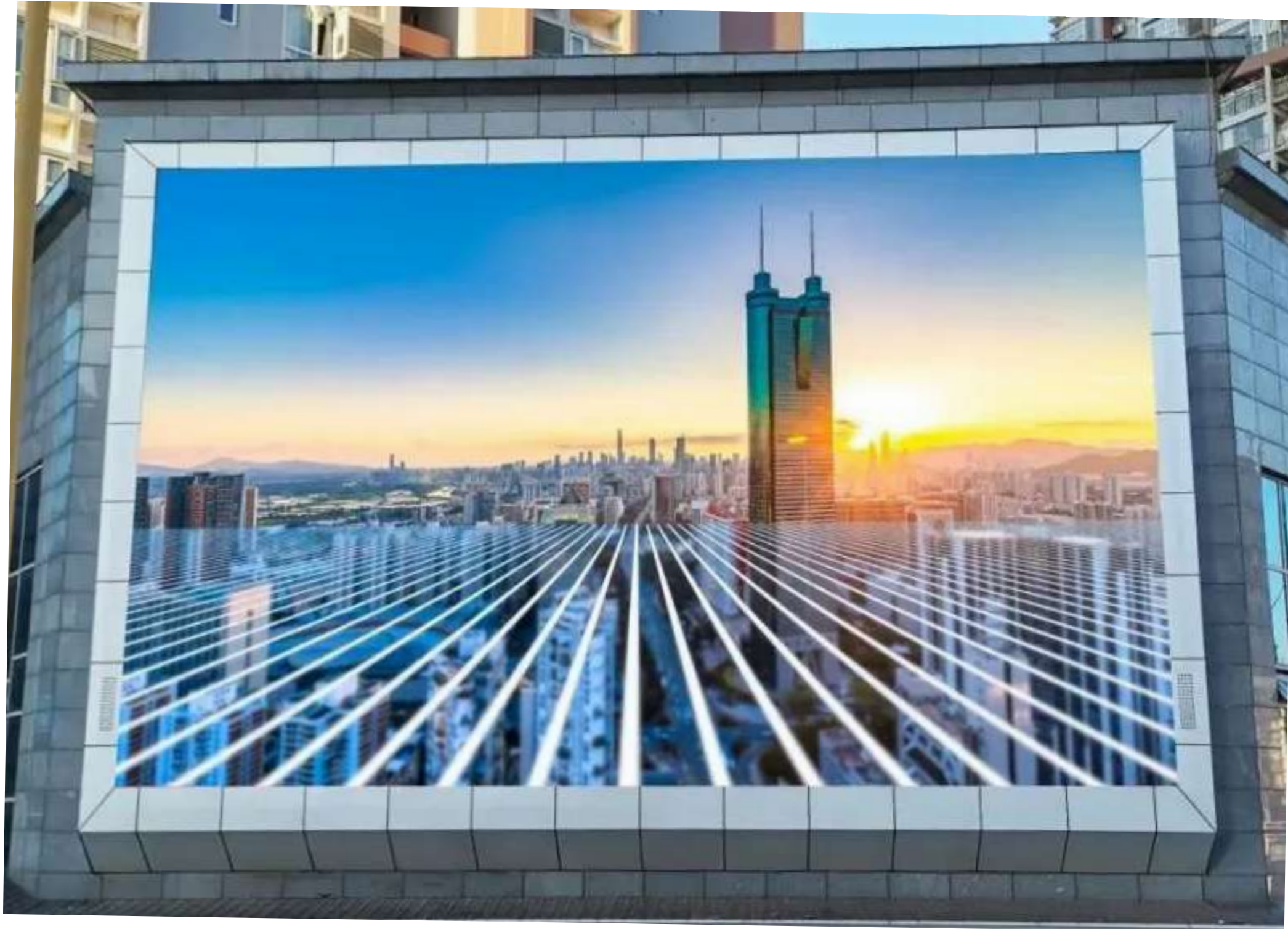
P8



P10



Easy maintenance - Back maintenance



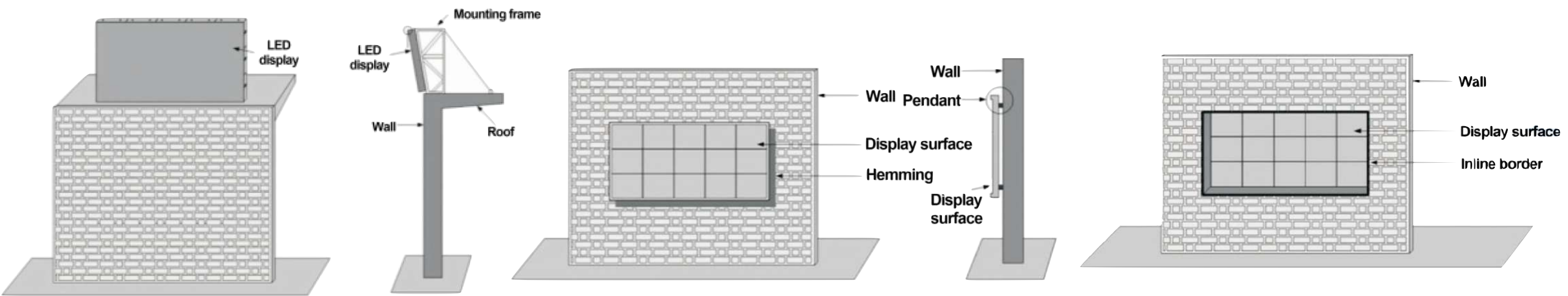
When used outdoors, the cabinet will be spliced together.

Case Studies



Installation Methods

Steel structure diagram



Roof installation method

Wall mounting method

inline mounting method

Professional Packaging & Transportation

